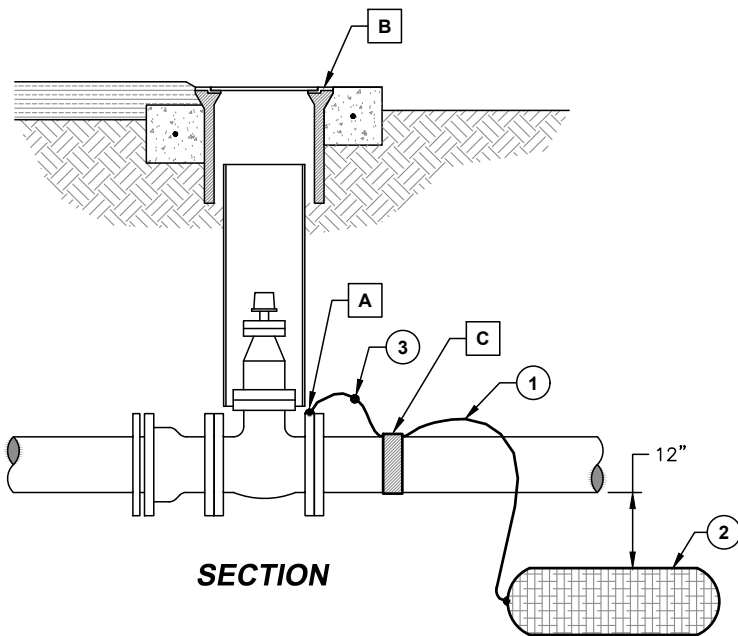


PLAN



SECTION

ITEM DESCRIPTION

- ① #12 AWG COPPER WIRE WITH HMW/PE INSULATION (TYP.) 10' LONG.
- ② ONE (1) 17 LBS. (OR TWO (2) 9 LBS.) MAGNESIUM ANODE.

NOTES:

- A** THERMITE WELD WIRE CONNECTION TO FLANGE OF THE VALVE BODY. COVER WITH PREFABRICATED WELD CAP. REPAIR COATING AROUND WELD AS NECESSARY.
- B** SEE S106 FOR VALVE BOX DETAILS.
- C** TAPE WIRE TO TOP OF PIPE W/ 2" WIDE TAPE. 2 FULL WRAPS MIN.
- D** SEE DIVISION 3, SECTION 2, "CORROSION CONTROL" FOR ADDITIONAL SPECIFICATIONS.

SEE APPENDIX D FOR A PRE-APPROVED MATERIALS LIST.

**MAGNESIUM ANODE
INSTALLATION**

DRAWING NO.
S112



APPROVED: *R. Brent Smith* ©
R. BRENT SMITH, P.E.
DIRECTOR OF TECHNICAL SERVICES

REVISION DATE
JUNE 12, 2020