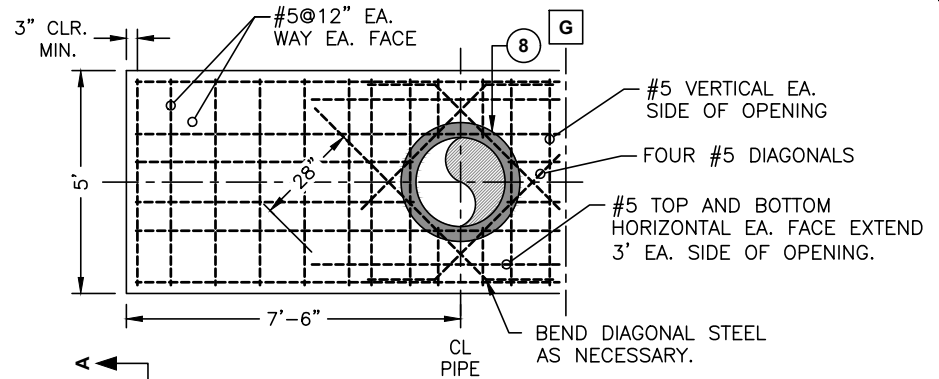


- ITEM DESCRIPTION
- ① 24" x OUTLET SIZE DIP TEE (FLG x FLG).
 - ② BUTTERFLY VALVE (FLG).
 - ③ 24" DIA. (PE x FLG) STEEL TRANSITION PIECE TO BE WELDED TO EXISTING STEEL PIPE. SEE NOTE E.
 - ④ INSULATING FLANGE GASKET AND TEST STATION.
 - ⑤ 24" RESTRAINED COUPLING.
 - ⑥ 24" DIP ADAPTER (FLG x PE) W/ MJ JOINT RESTRAINT.
 - ⑦ CONCRETE THRUST WALL.
 - ⑧ 4" x 0.5" STEEL THRUST COLLAR WELDED TO BUTT STRAP.
 - ⑨ 12" LONG FLG X FLG SPOOLS PER DETAIL S108.

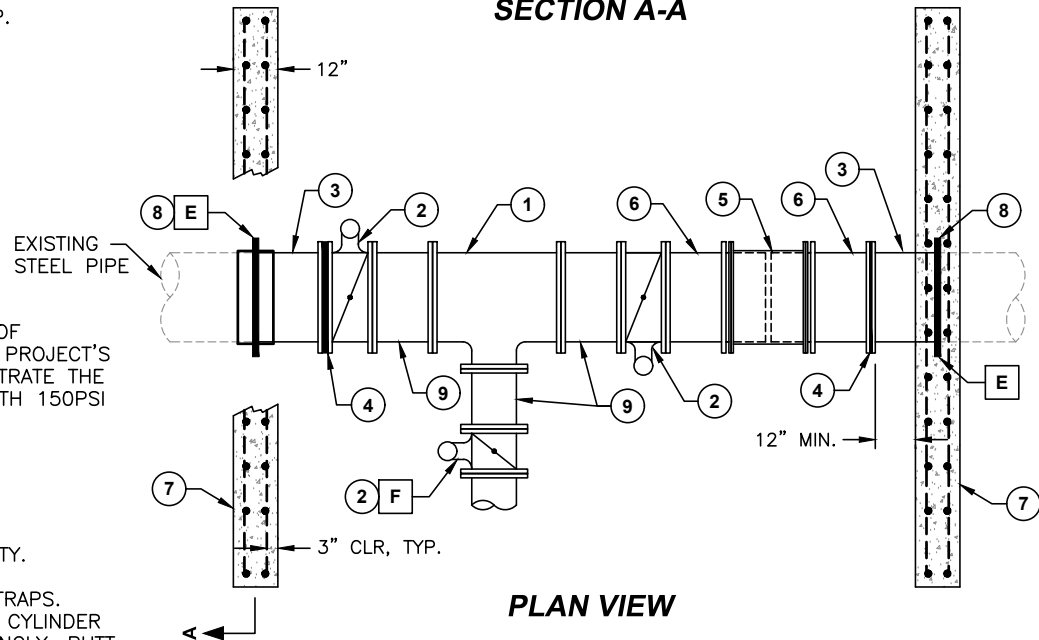
NOTES:

- A ALL CCML PIPE CUT-INS SHALL BE DESIGNED BY STATE OF CALIFORNIA REGISTERED CIVIL ENGINEER SPECIFIC TO THE PROJECT'S SITE AND CONDITIONS. THIS DETAIL IS INTENDED TO ILLUSTRATE THE REQUIRED COMPONENTS FOR A TYPICAL 24-INCH MAIN WITH 150PSI TEST PRESSURE.
- B MIN. LAP LENGTH OF REBAR = 18".
- C REBAR SHALL BE GRADE 40 UNLESS OTHERWISE NOTED.
- D BACKFILL SHALL BE COMPACTED TO 95% MAX. DRY DENSITY.
- E MAKE CONNECTION TO EXISTING PIPE WITH STEEL BUTT STRAPS. REMOVE COATING AND EXPOSE STEEL CYLINDER. CONFIRM CYLINDER THICKNESS AND WELD BUTT STRAP TO CYLINDER ACCORDINGLY. BUTT STRAPS TO BE WELDED INSIDE AND OUTSIDE, SEE BUTT STRAP DETAIL. FILL INTERIOR JOINT RECESS WITH CEMENT GROUT AFTER INSTALLATION OF STEEL TRANSITION FITTING.
- F VALVE OPERATOR LOCATION, (TYP).
- G SECTION A-A IS SHOWN AS A HALF SECTION.

SEE APPENDIX D FOR A PRE-APPROVED MATERIALS LIST.



SECTION A-A



PLAN VIEW

STANDARD CCML CUT-IN

DRAWING NO.

S113



APPROVED: *R. Brent Smith*
R. BRENT SMITH, P.E.
DIRECTOR OF TECHNICAL SERVICES

REVISION DATE

JUNE 12, 2020