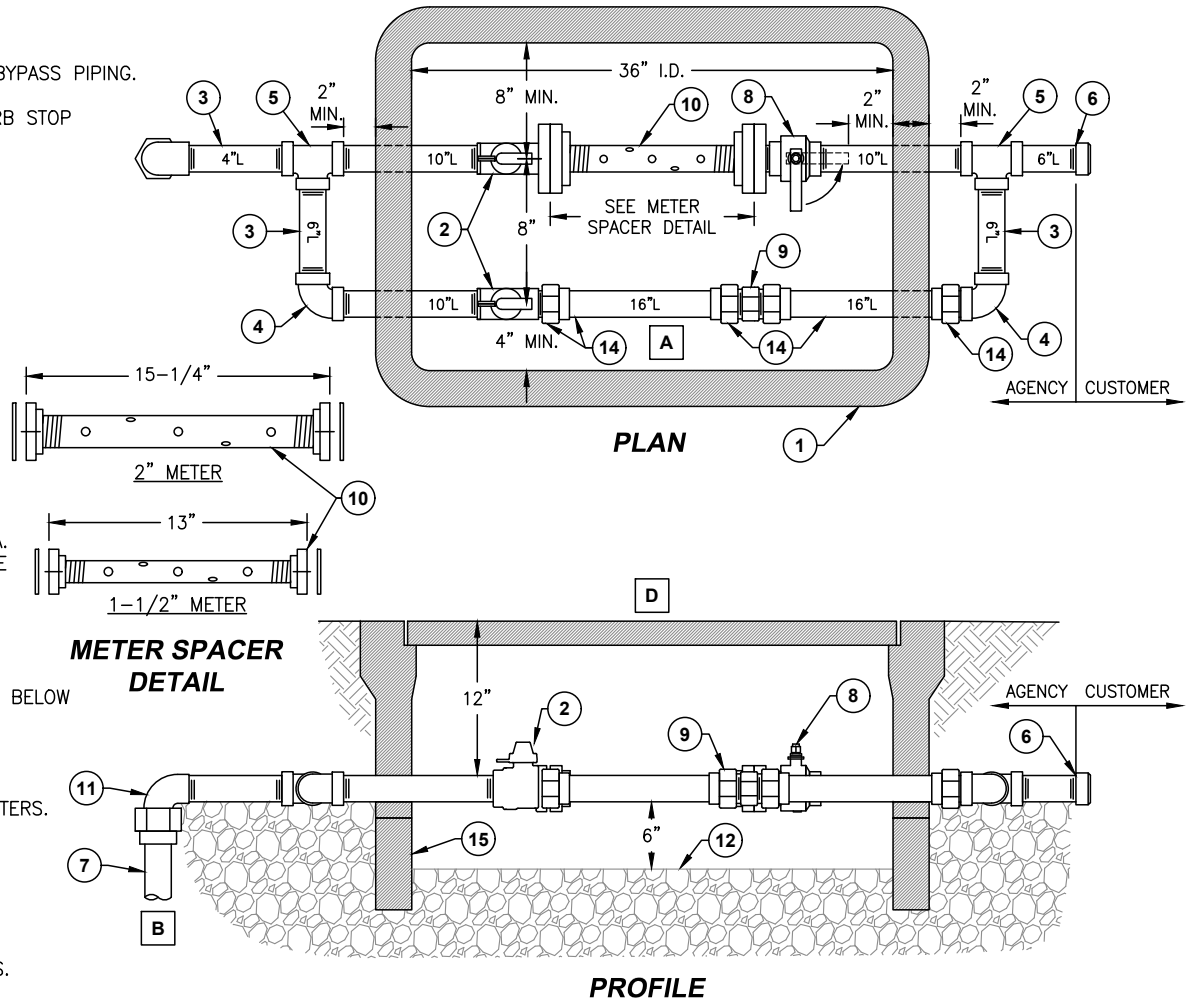


- ITEM DESCRIPTION
- ① CHRISTY B40 METER BOX, SLOT EACH SIDE FOR BYPASS PIPING.
 - ② 2" NPT CURB STOP PAD LOCKABLE. (BYPASS CURB STOP NORMALLY CLOSED AND LOCKED)
 - ③ 2" NPT BRASS PIPING TYPICAL.
 - ④ 2" 90° NPT BRASS FITTINGS.
 - ⑤ 2" x 2" x 2" NPT BRASS TEE.
 - ⑥ 2" NPT BRASS SERVICE TAIL AND CAP.
 - ⑦ 2" TYPE "K" COPPER FROM MAIN, NO FITTINGS ALLOWED BETWEEN CORP STOP AND #11 FITTING.
 - ⑧ 2" NPT BRASS BALL VALVE.
 - ⑨ 2" TYPE-K COPPER COMPRESSION FITTING.
 - ⑩ METER SPACER (SEE METER SPACER DETAIL) SCH 80 PVC NPT PIPE NIPPLE WITH 5 EA. X 1/4" DIA. HOLES THROUGH BOTH SIDES, WITH METER FLANGE x FIP ADAPTER EACH SIDE (SIZE PER METER). GASKETS AS SUPPLIED WITH FLANGE ASSEMBLY.
 - ⑪ 2" x 90° COMP x FIP BRASS FITTING.
 - ⑫ 6" OF 3/4" CRUSHED ROCK, 6" MIN. SEPARATION BELOW METER.
 - ⑬ ALIGN AND CENTER METER BOX OVER ASSEMBLY.
 - ⑭ TYPE-K COPPER AND COMPRESSION FITTING ADAPTERS.
 - ⑮ B40 METER BOX EXTENSION (8" DEEP MIN.).

NOTES:

- A** BYPASS REQUIRED FOR ALL COMMERCIAL SERVICES.
- B** SEE S202 FOR ADDITIONAL SERVICE REQUIREMENTS AT THE MAIN.
- C** PIPE LENGTHS ARE APPROXIMATE AND VARY PER MFG. THE CONTRACTOR IS RESPONSIBLE FOR VERIFYING ALL LENGTHS TO MEET CLEARANCES.
- D** UTILITY STEEL DIAMOND PLATE LID, PLACER WATERWORKS PW/B40-S (2 PIECE) OR APPROVED EQUAL.
- E** FOR 1-1/2" METER, PROVIDE TWO 2" x 1-1/2" FLG x FLG ADAPTERS.
SEE APPENDIX D FOR A PRE-APPROVED MATERIALS LIST.



**COMMERCIAL SERVICE WITH
BYPASS FOR 1-1/2" AND 2" METERS**

DRAWING NO.
S203



APPROVED: *R. Brent Smith* [®]
R. BRENT SMITH, P.E.
DIRECTOR OF TECHNICAL SERVICES

REVISION DATE
JUNE 12, 2020