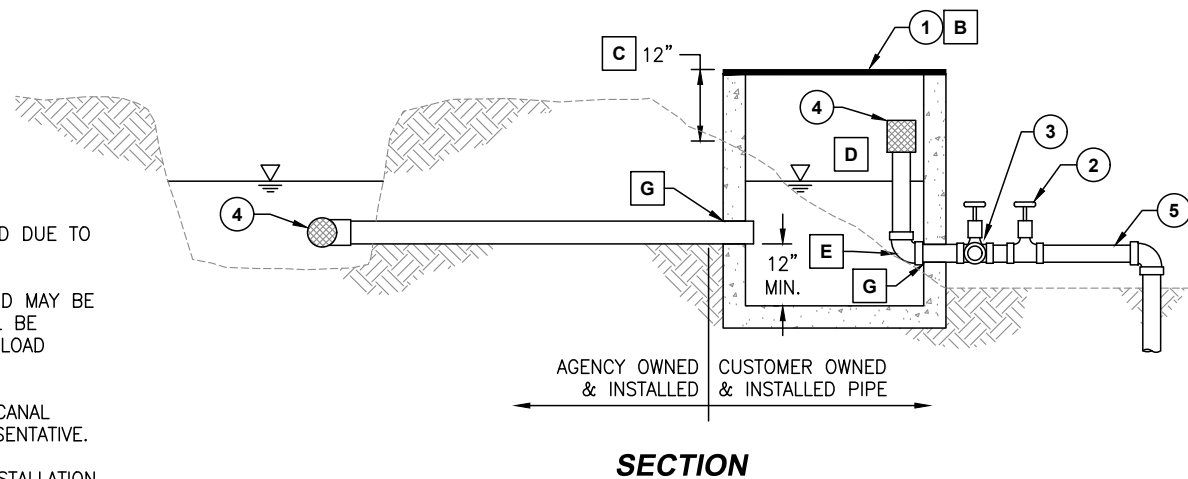
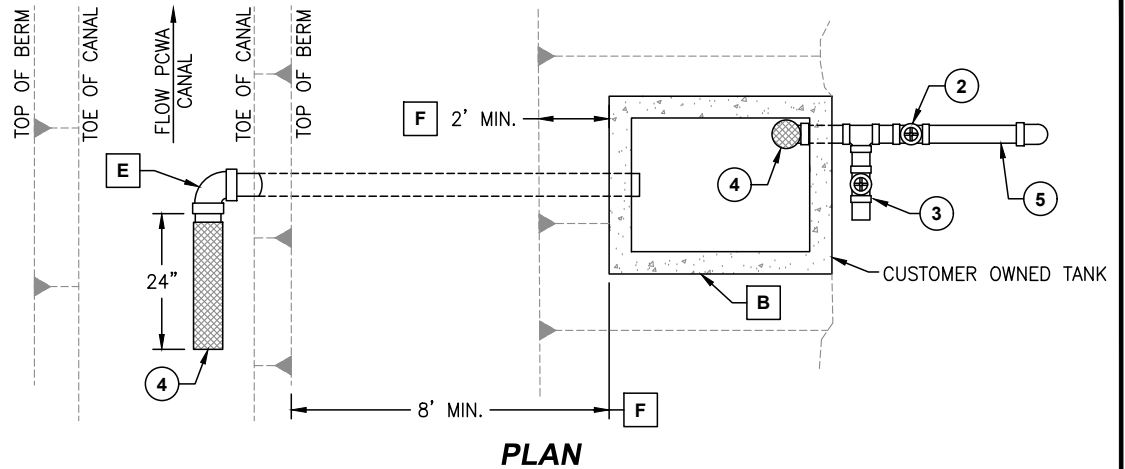


- | ITEM | DESCRIPTION |
|------|---|
| ① | LID – GALV. STEEL CHECKER PLATE OR GRATING TANK LID SHALL BE CAPABLE OF SUPPORTING A POINT LOAD OF 200 LBS. (MIN.) |
| ② | OUTLET SHUT OFF VALVE, MATCH SIZE OF TANK OUTLET PIPE. |
| ③ | FLUSHING OUTLET, MATCH SIZE OF TANK OUTLET PIPE |
| ④ | THD RAW WATER SCREEN SIZED FOR 1/2" LOSS AT MAX. FLOW, MAX. SCREEN OPENING OF 1/2" (CUSTOMER SYSTEM INLET SCREEN SHOWN UPRIGHT FOR CLEANING). |
| ⑤ | OUTLET PIPING |



NOTES:

- A** STABILITY OF BERM MUST NOT BE ENDANGERED DUE TO SUMP OR INLET PIPE INSTALLATION.
- B** MATERIAL FOR CONSTRUCTION OF TANK AND LID MAY BE CHOSEN BY CUSTOMER. TANK AND LID SHALL BE WATER TIGHT AND MUST SUPPORT A 200 LB. LOAD APPLIED TO THE LID.
- C** TOP OF TANK SHALL BE 12" ABOVE TOP OF CANAL BERM, OR AS DETERMINED BY AGENCY REPRESENTATIVE.
- D** WATER SURFACE ELEVATION DEPENDENT ON INSTALLATION SITE.
- E** INSTALL 90° EL TO ALLOW SCREEN TO BE ROTATED 90°.
- F** 2' MIN. FROM OUTSIDE EDGE OF BERM. 8' MIN. FROM INSIDE EDGE OF BERM, WHICHEVER IS GREATER.
- G** PIPE PENETRATION SHALL BE SEALED WITH A WATER TIGHT PROCESS DEPENDING ON TANK MATERIAL.

SEE APPENDIX D FOR A PRE-APPROVED MATERIALS LIST.

**CUSTOMER IRRIGATION
WATER RECEIVING TANK**

DRAWING NO.
S305



APPROVED: *R. Brent Smith* (Signature)
R. BRENT SMITH, P.E.
DIRECTOR OF TECHNICAL SERVICES

REVISION DATE
JUNE 12, 2020