



American River Basin Study

Portfolio Evaluation

*Preliminary Results
for Internal
Discussions
(2/11/2020)*



CITY OF
FOLSOM
DISTINCTIVE BY NATURE



City of
SACRAMENTO



CITY OF
ROSEVILLE
CALIFORNIA

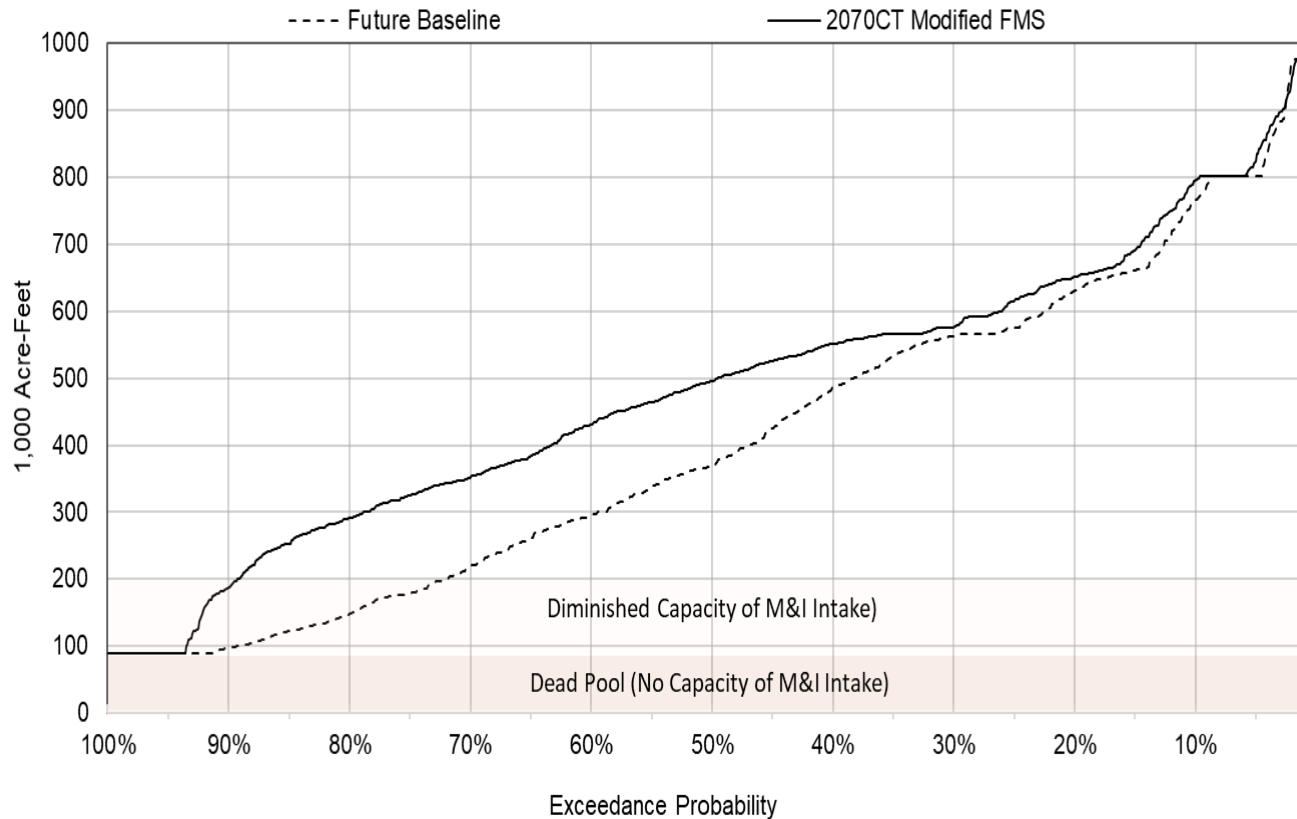


No CVP Contract Assurances

Water Purveyor	Reduced CVP Contract Amount	Increased Groundwater Pumping
City of Roseville	32	23
Placer County Water Agency	35	31
Sacramento County Water Agency (SMUD reassignment portion)	30	13
Sacramento Municipal Utility District	30	2
Total	127 TAF/year	69 TAF/year

For internal discussions only - preliminary results subject to revisions (2/11/2020)

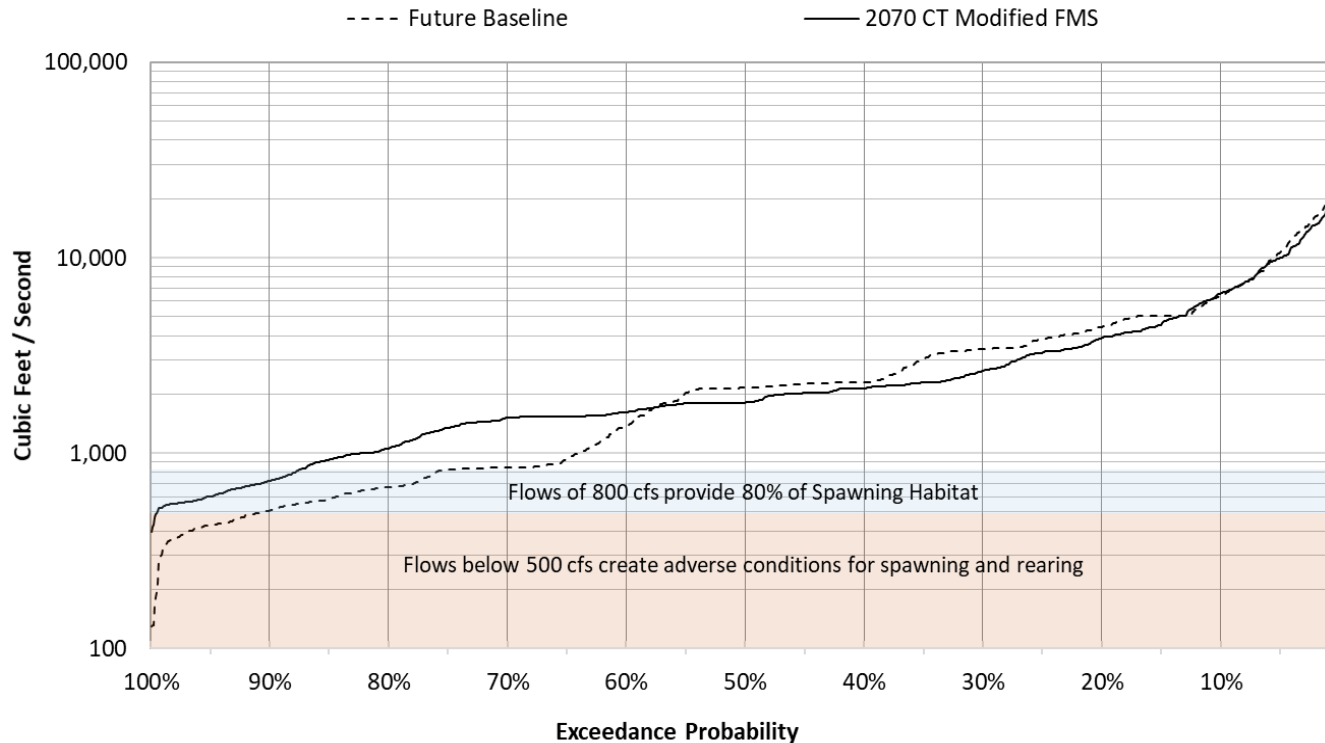
Modified Flow Management Standard Project Portfolio



Folsom Reservoir 2070 Storage Exceedance under Modified Flow Management Standard Compared to Future Baseline

For internal discussions only - preliminary results subject to revisions (2/11/2020)

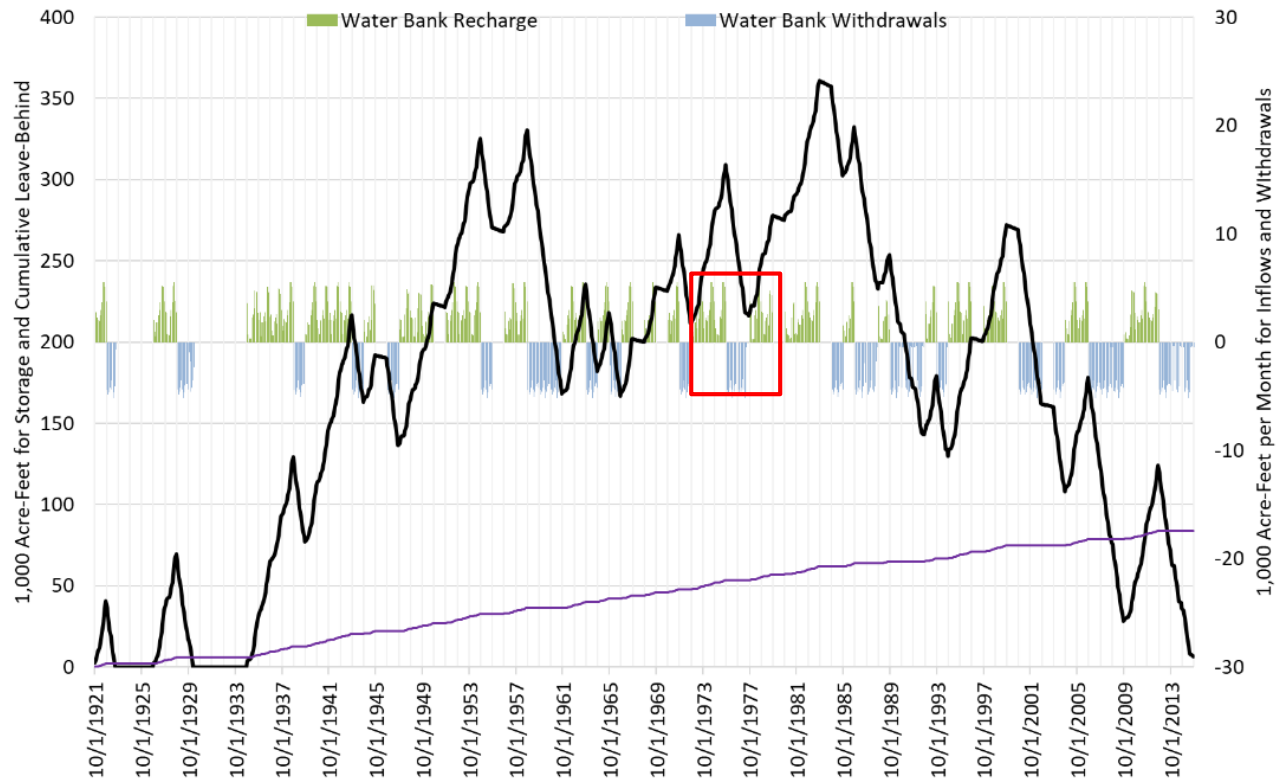
Modified Flow Management Standard Project Portfolio



Lower American River 2070 Flow Exceedance under Modified Flow Management Standard Compared to Future Baseline

For internal discussions only - preliminary results subject to revisions (2/11/2020)

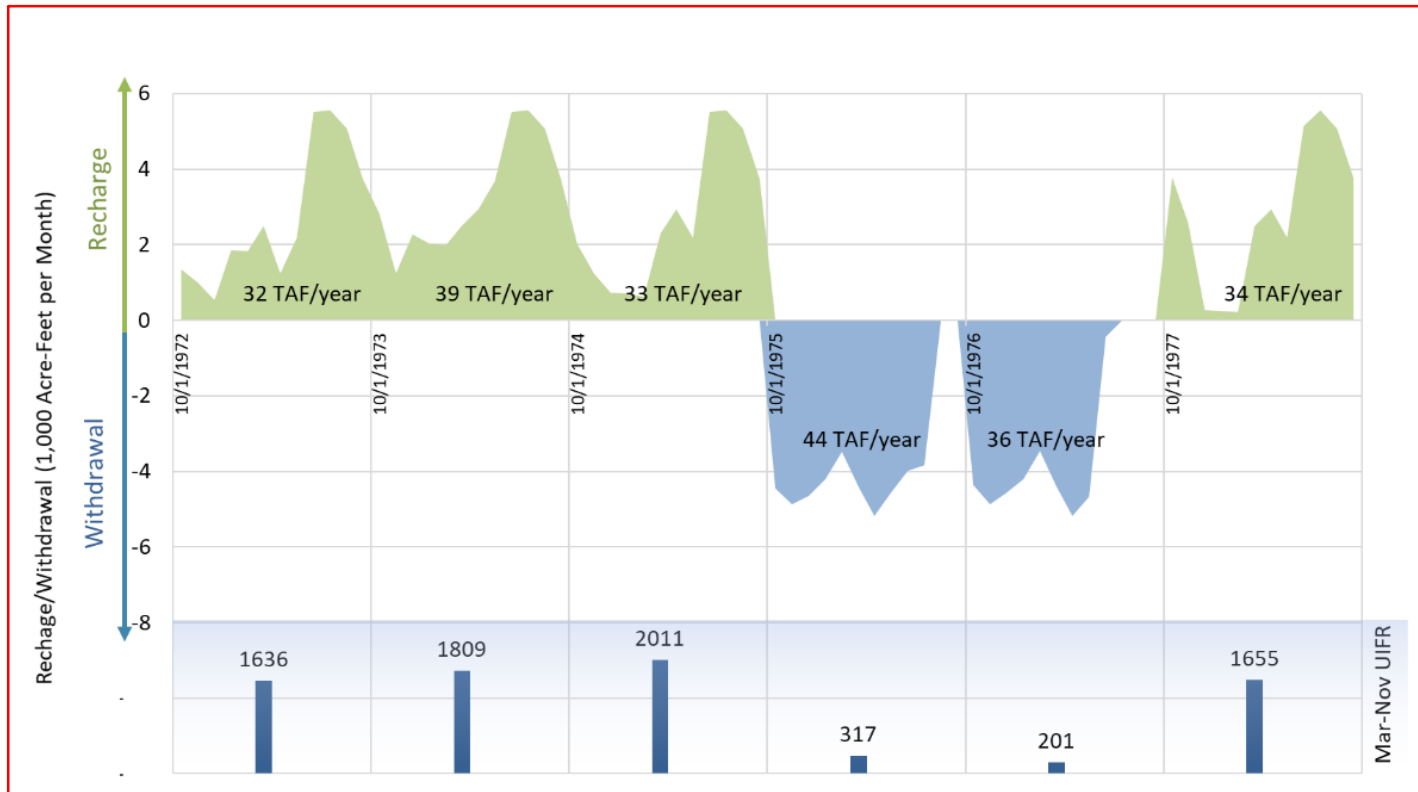
Federally Recognized Groundwater Bank Portfolio



Simulated Operations of the Federally Recognized Groundwater Bank under 2070 Central Tendency Climate Scenario

For internal discussions only - preliminary results subject to revisions (2/11/2020)

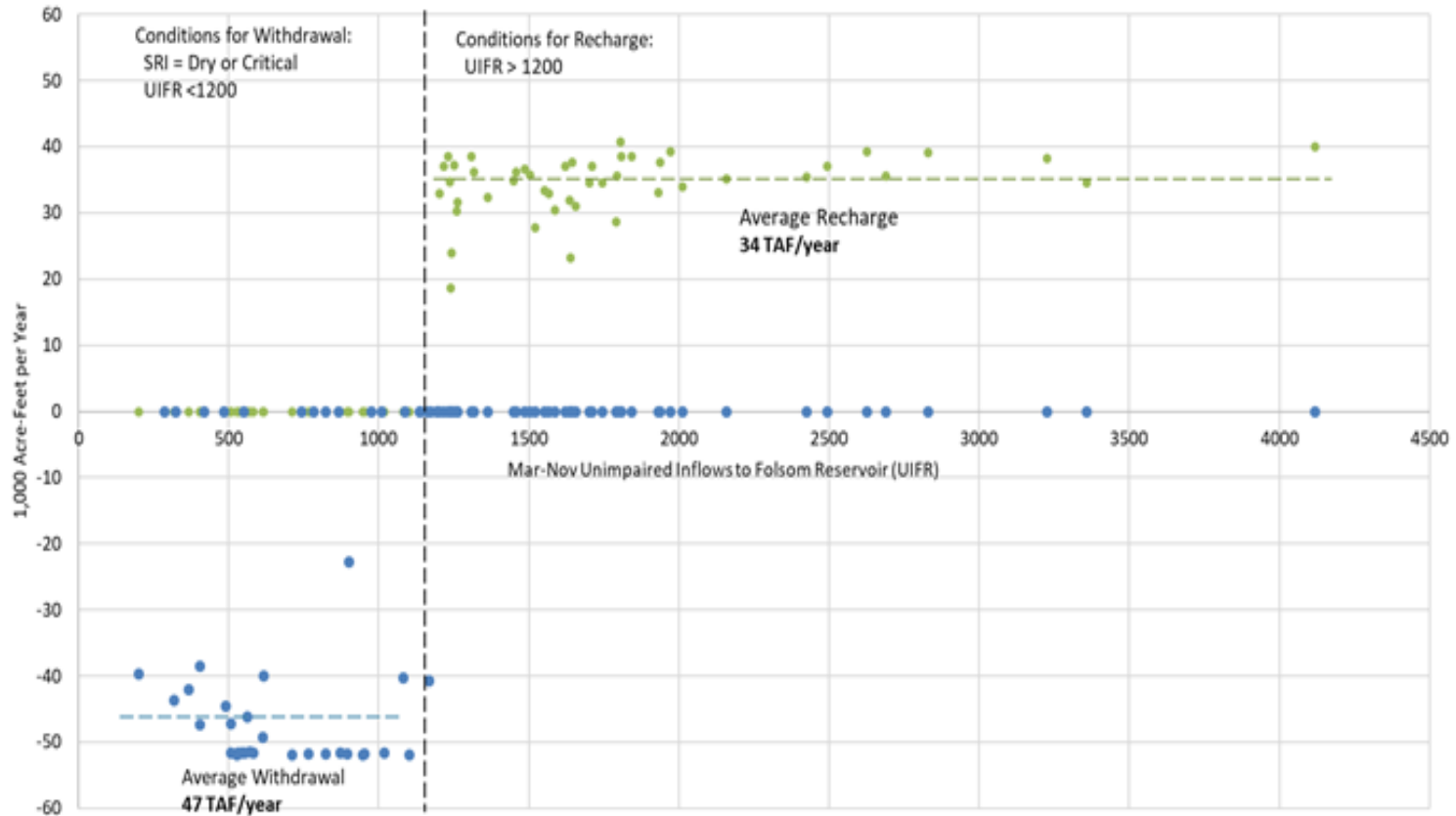
Federally Recognized Groundwater Bank Portfolio



Simulated Operations of the Federally Recognized Groundwater Bank under 2070 Central Tendency Climate Scenario

For internal discussions only - preliminary results subject to revisions (2/11/2020)

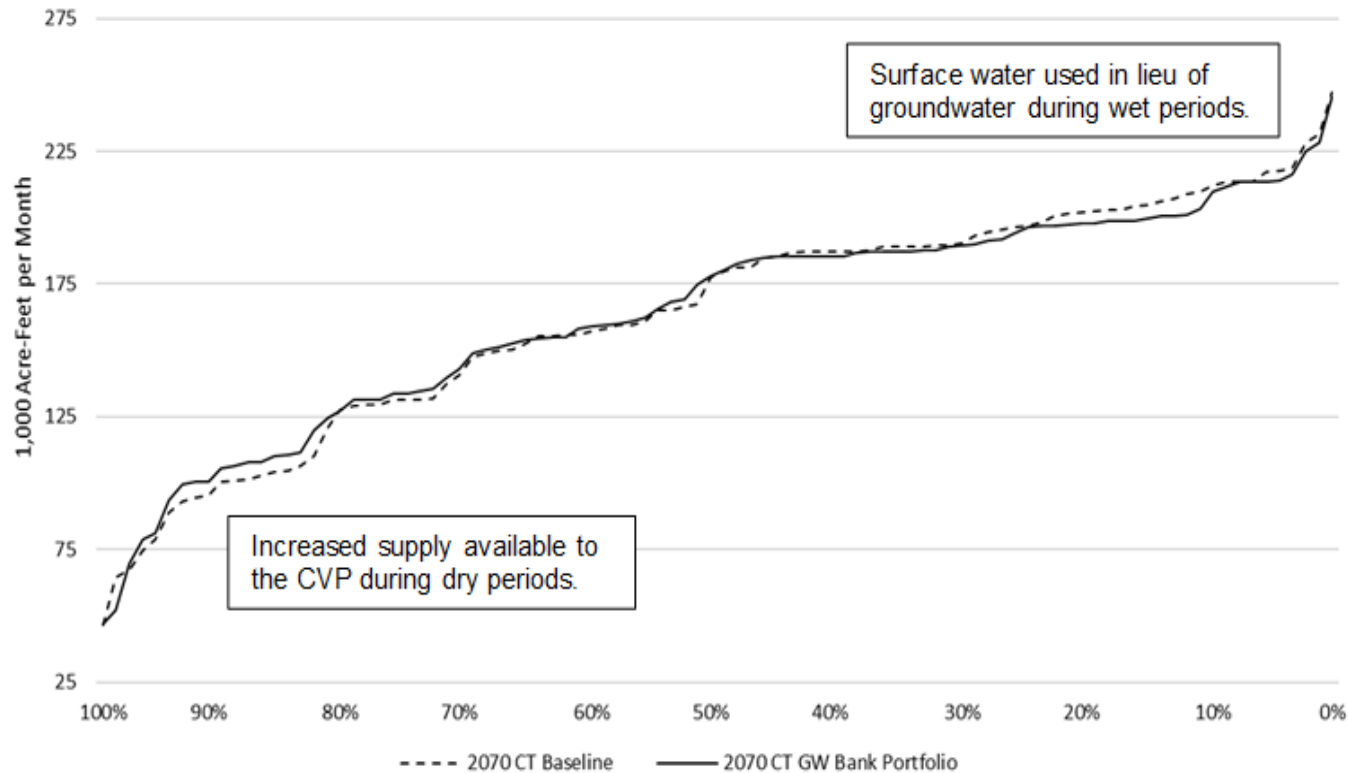
Federally Recognized Groundwater Bank Portfolio



Simulated Recharge and Withdrawals of the Federally Recognized Groundwater Bank Portfolio under 2070 Central Tendency Climate Scenario

For internal discussions only - preliminary results subject to revisions (2/11/2020)

Federally Recognized Groundwater Bank Portfolio

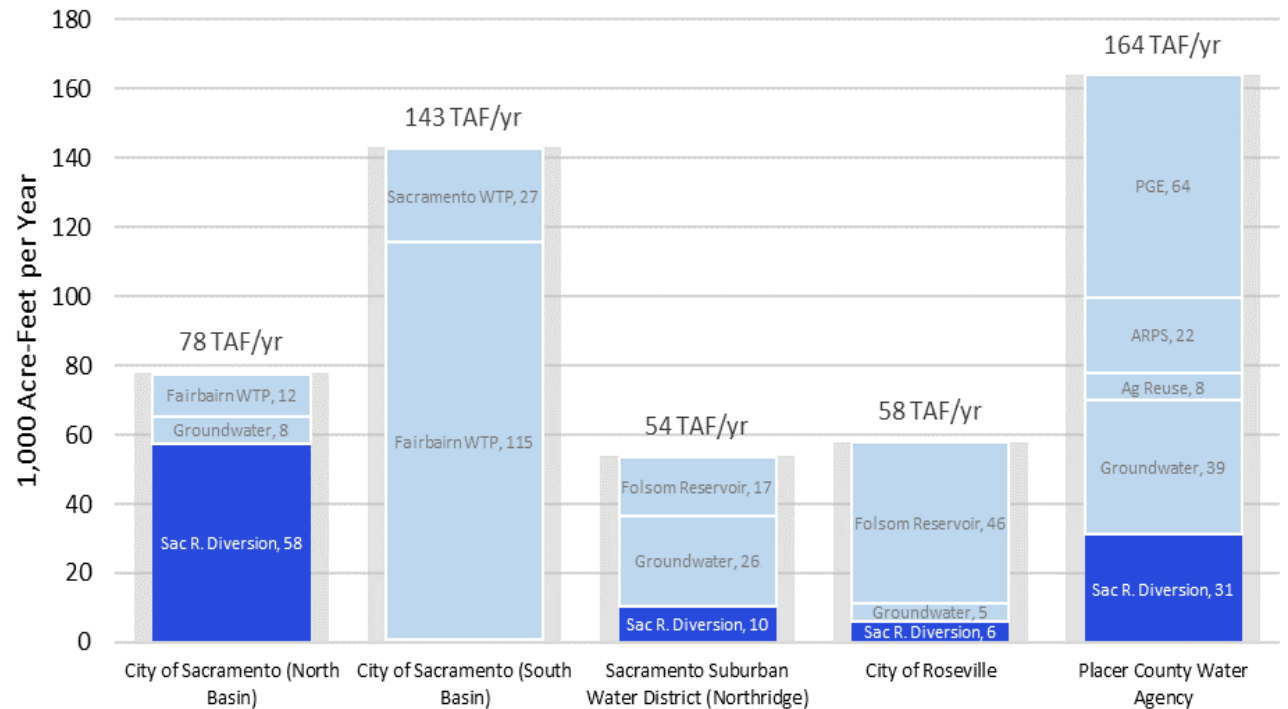
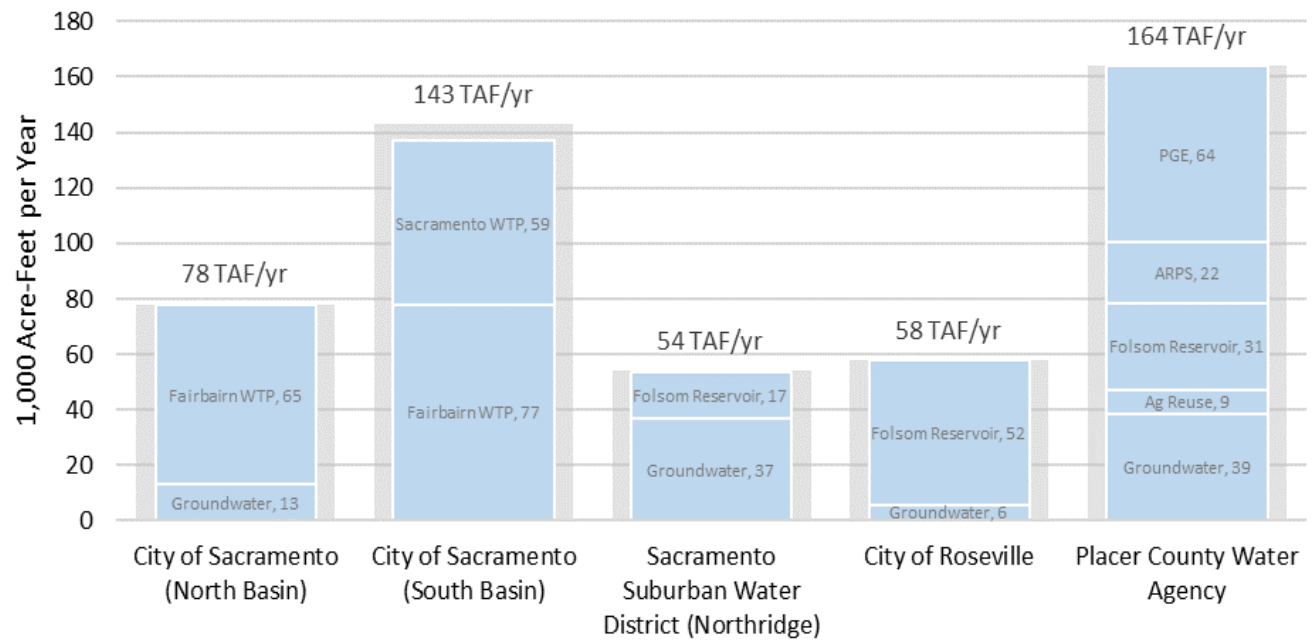


Comparison of Lower American River Flows (June-August Monthly Average) Under the Federally Recognized Groundwater Bank Portfolio and Future Baseline for 2070 Central Tendency Climate Scenario

For internal discussions only - preliminary results subject to revisions (2/11/2020)

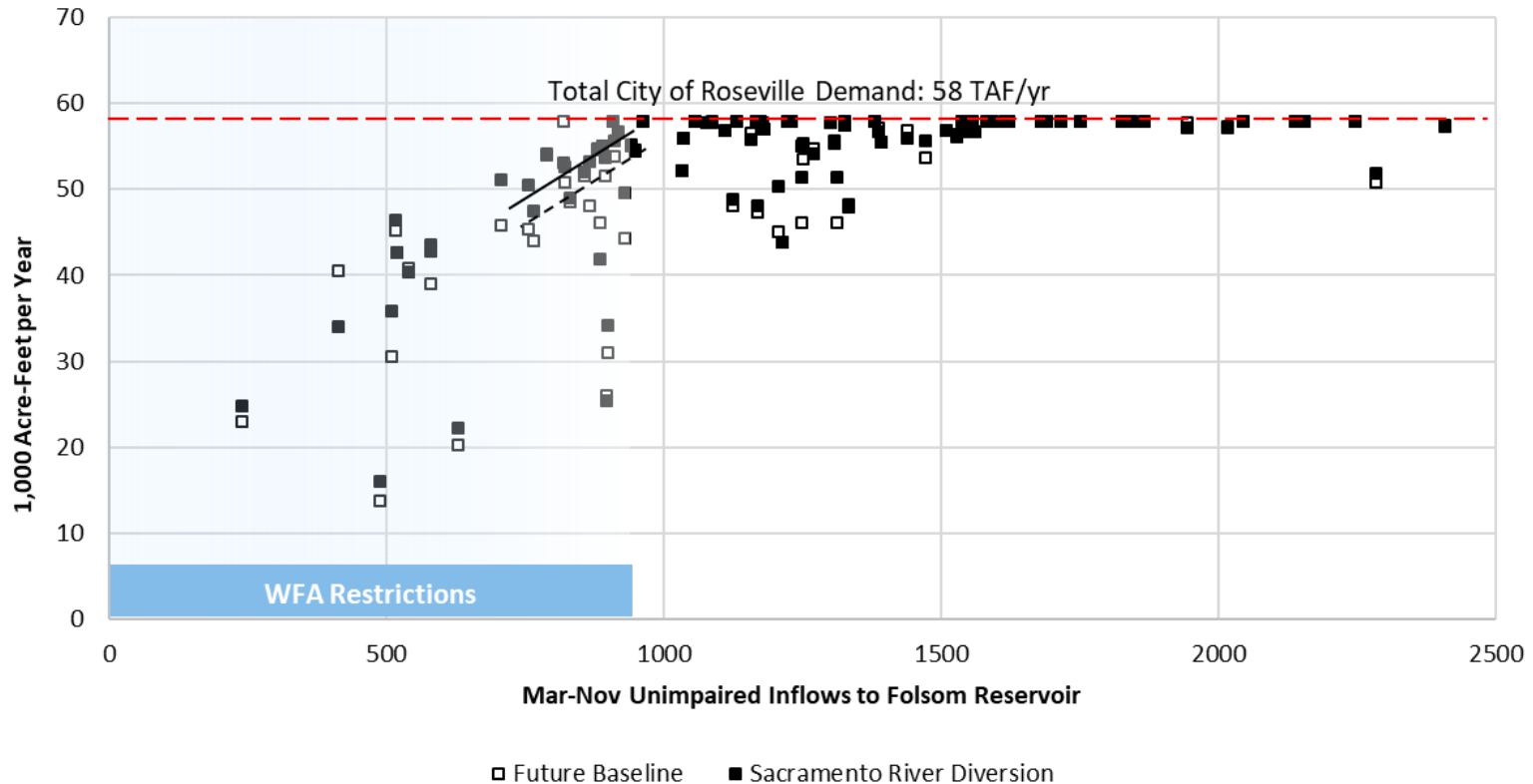
Sacramento River Diversion (RiverArc) Portfolio

City of Sacramento		Sacramento Suburban Water District	City of Roseville	Placer County Water Agency
North Basin	South Basin			
5 TAF/year Less Reliance on Groundwater	Improved water supply reliability during dry periods by utilizing Fairbairn WTP	11 TAF/year less reliance on groundwater	6 TAF/year less reliance on Folsom Reservoir water supplies	30 TAF/year less reliance on American River supplies
53 TAF/year less reliance on the American River			Relief from WFA dry year restrictions	



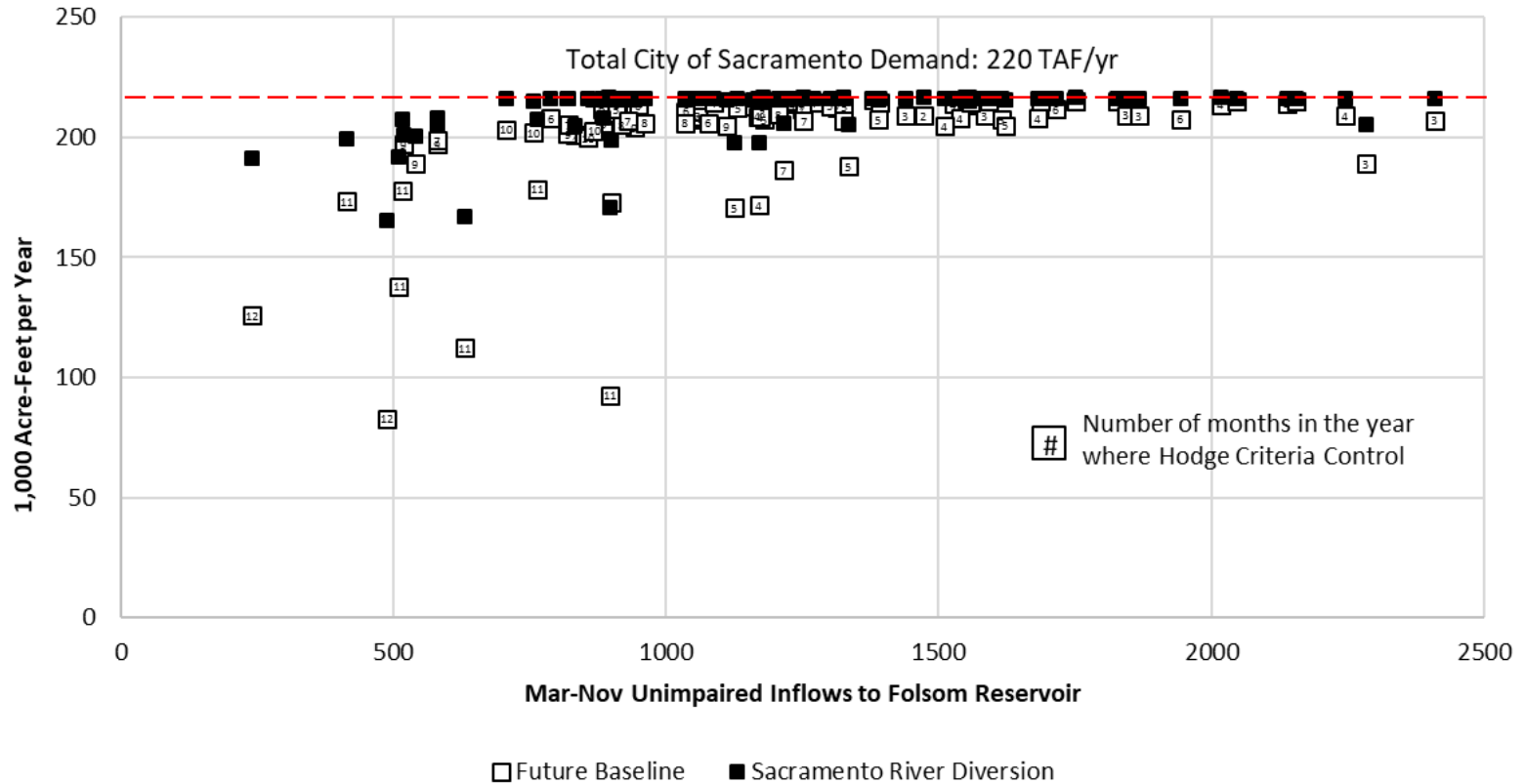
For internal discussions only - preliminary results subject to revisions (2/11/2020)

Sacramento River Diversion (RiverArc) Portfolio

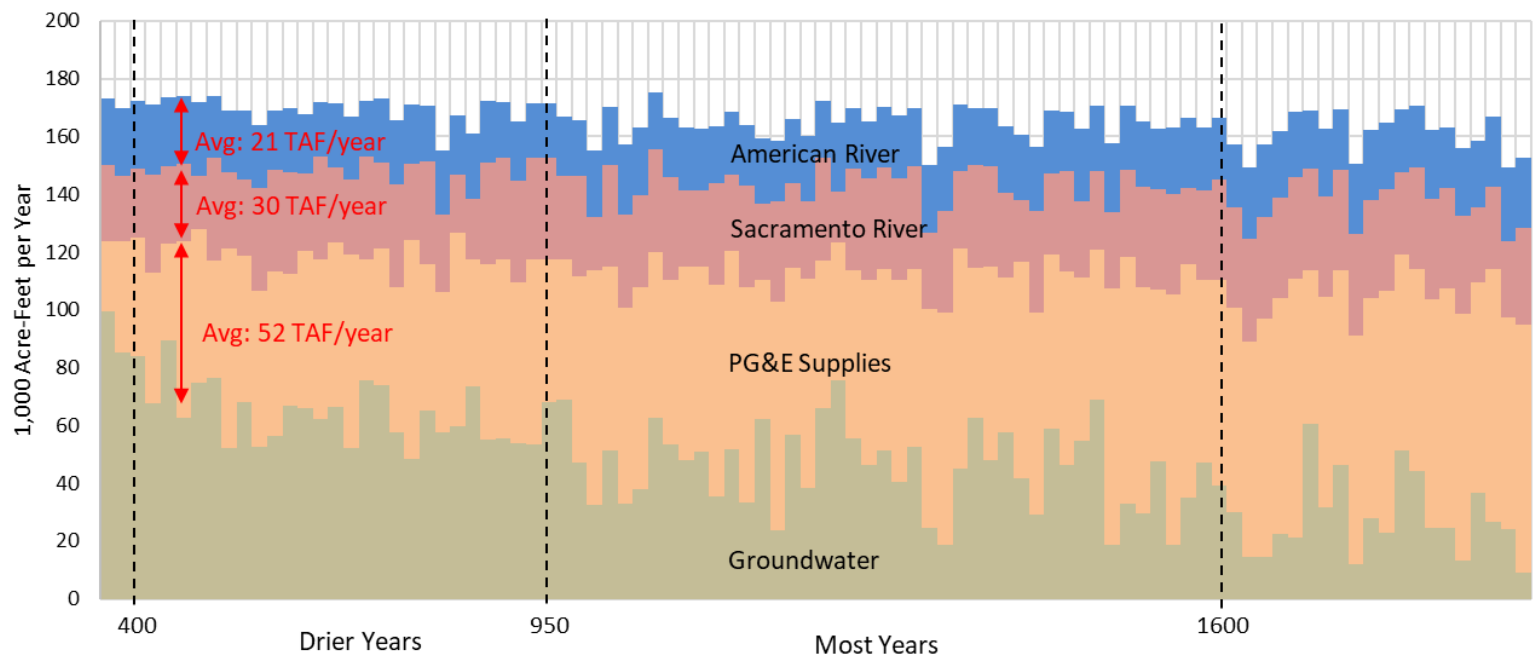
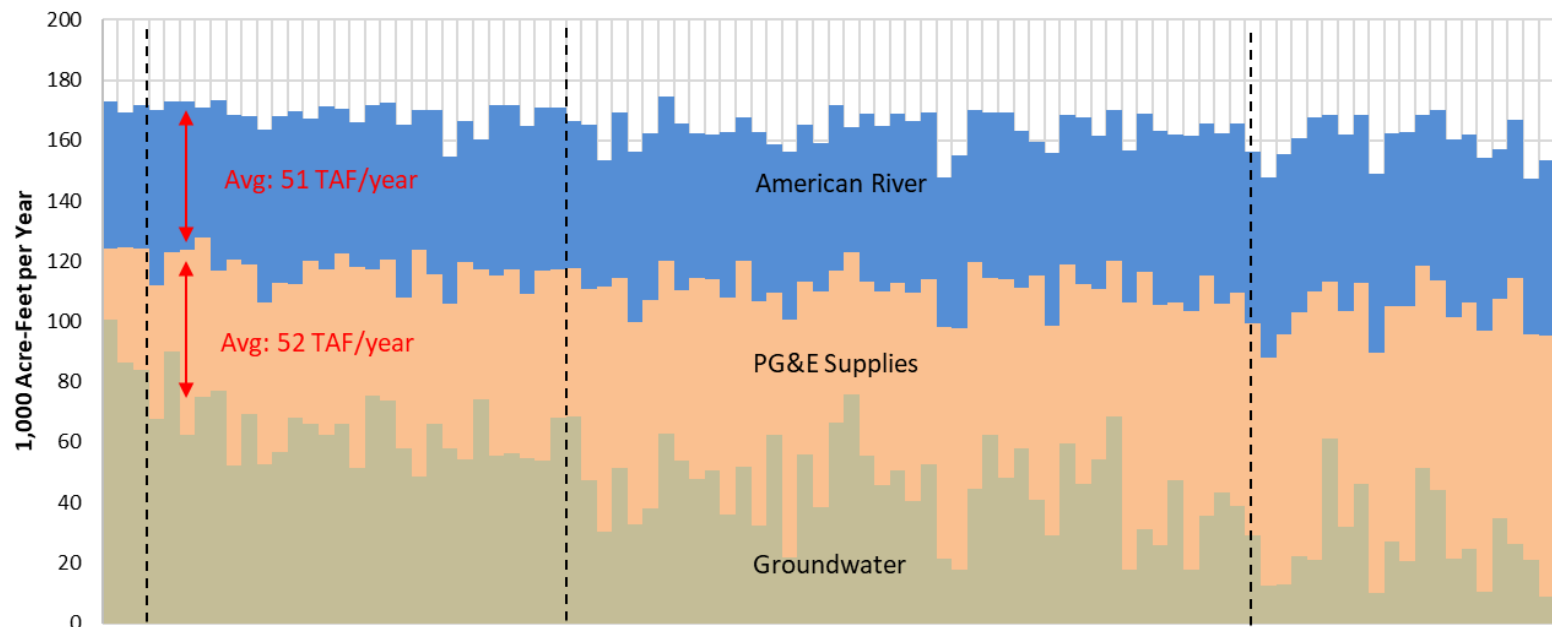


City of Roseville's 2070 Annual Surface Water Diversions Under Sacramento River Diversion Portfolio Compared to the Future Baseline

Sacramento River Diversion (RiverArc) Portfolio



City of Sacramento's 2070 Annual Surface Water Diversions Under Sacramento River Diversion Portfolio Compared to the Future Baseline

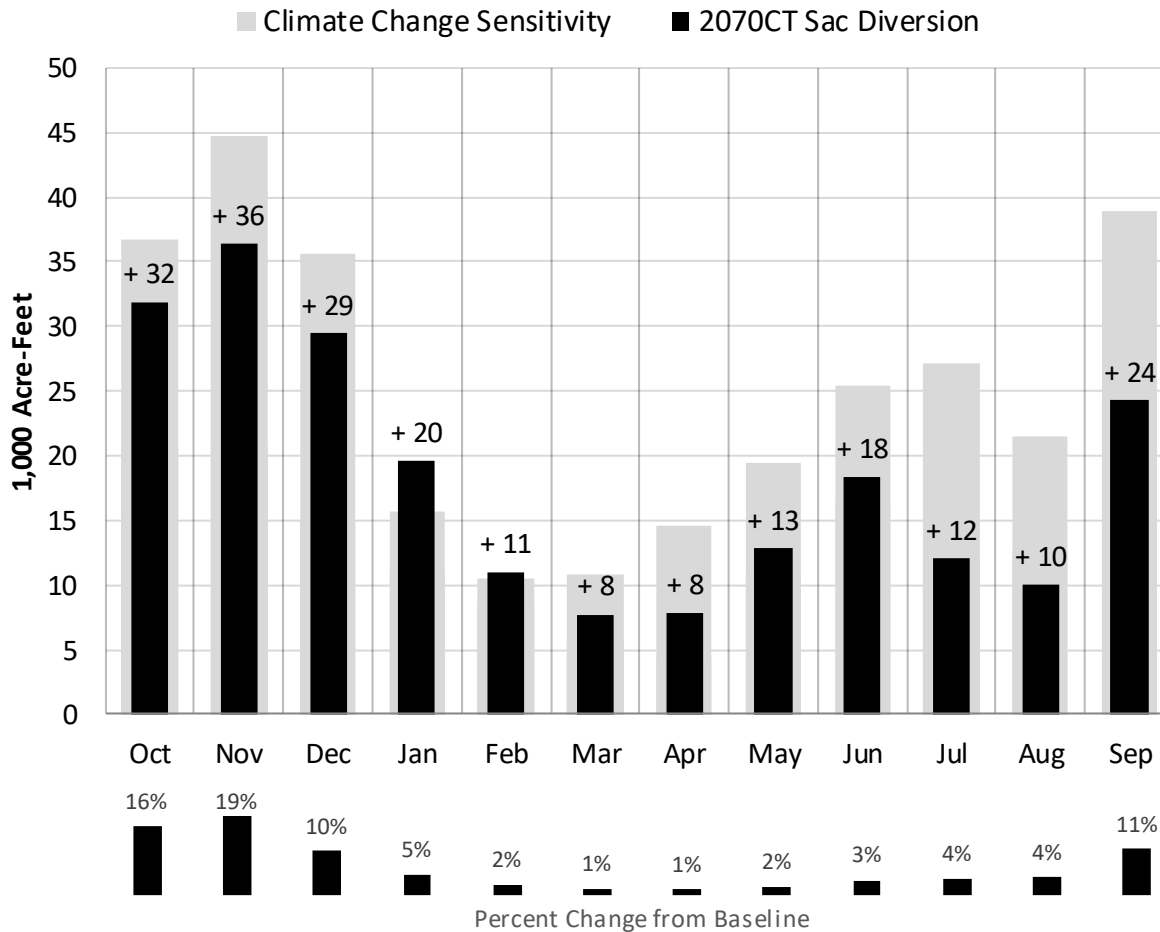


Mar-Nov Unimpaired Inflows to Folsom Reservoir (UIFR) 1,000 Acre-Feet per Year

For internal discussions only - preliminary results subject to revisions (2/11/2020)



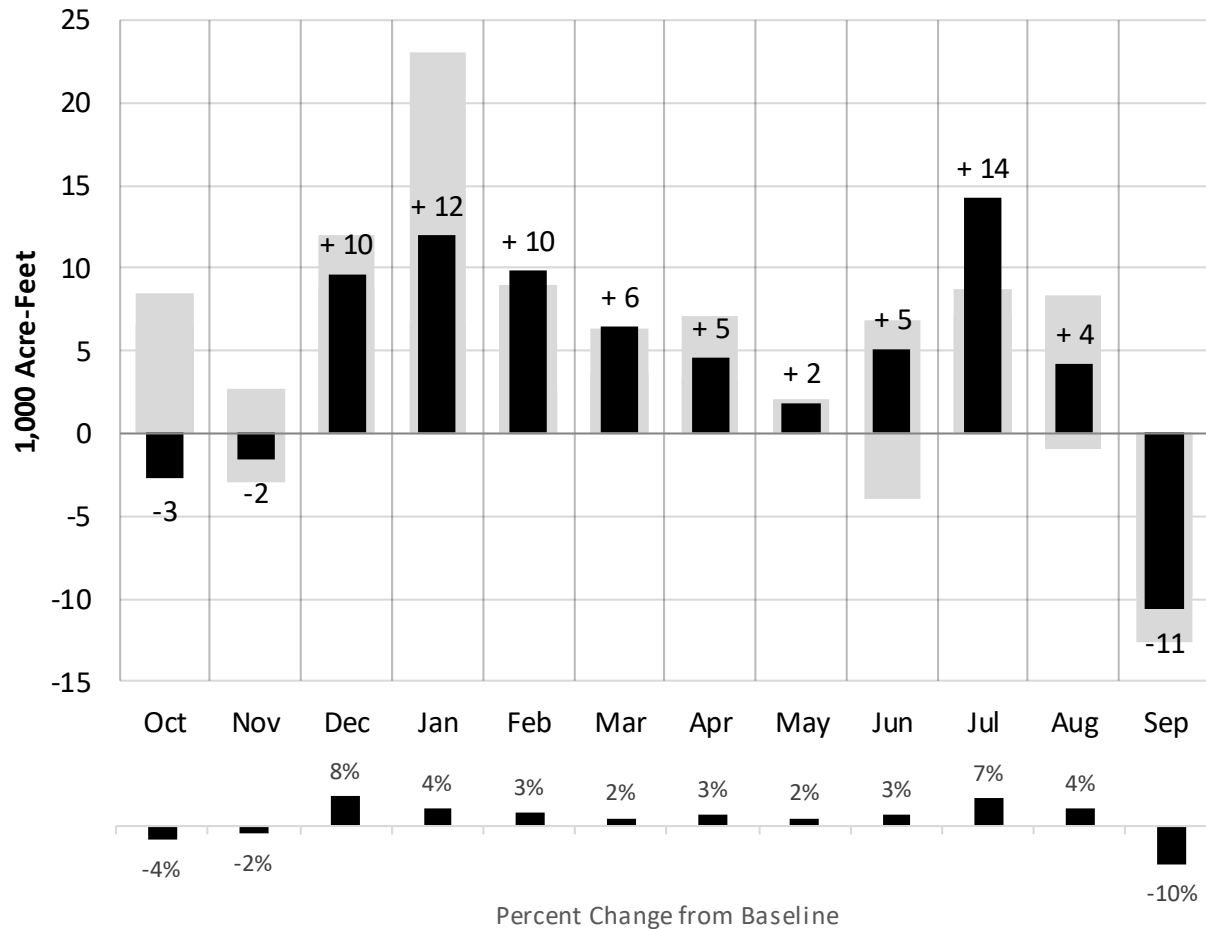
Sacramento River Diversion (RiverArc) Portfolio



Change in Folsom Reservoir 2070 Storage Under Sacramento River Diversion Portfolio from the Future Baseline

For internal discussions only - preliminary results subject to revisions (2/11/2020)

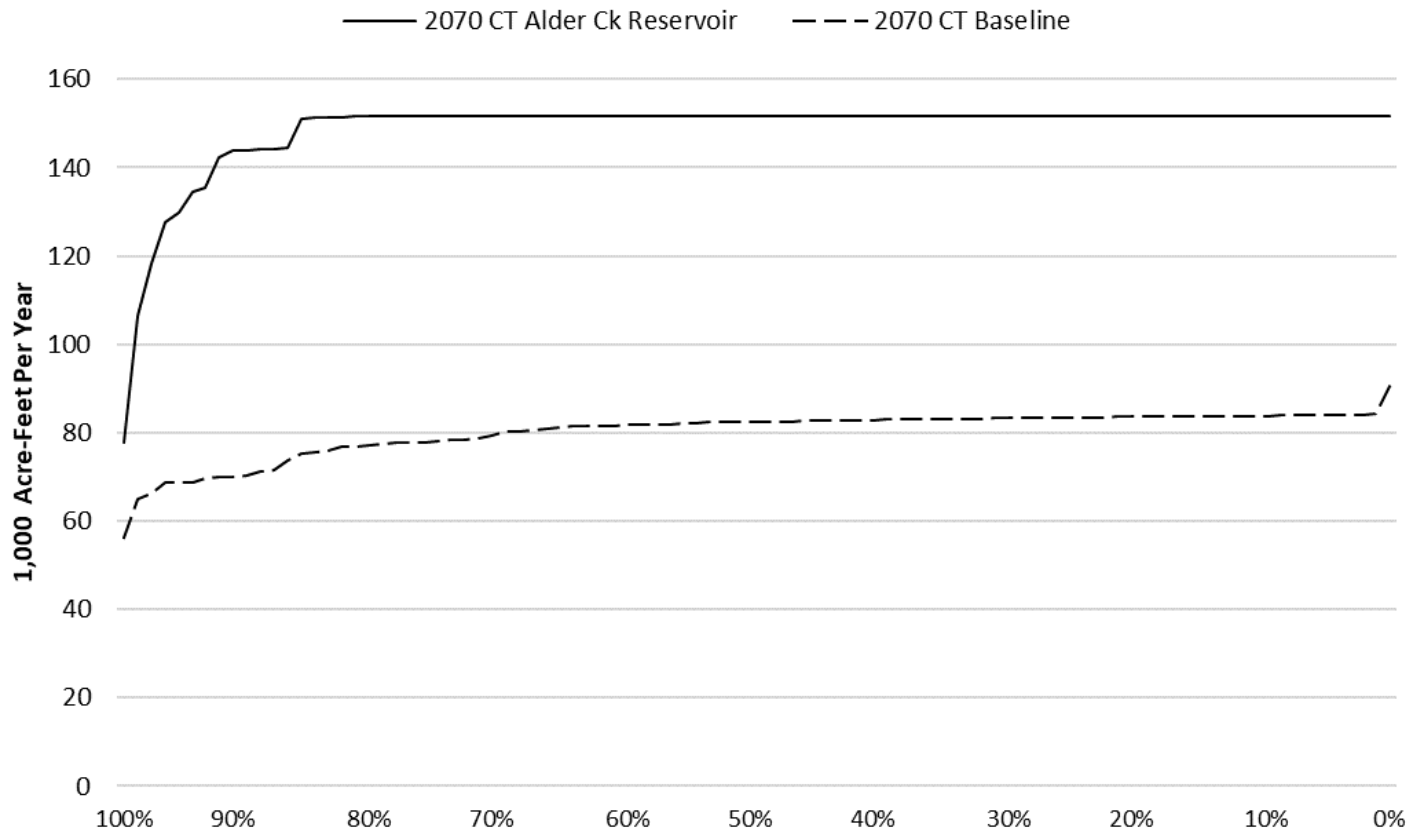
Sacramento River Diversion (RiverArc) Portfolio



Change in 2070 American River at Sacramento River Confluence Flows Under Sacramento River Diversion Portfolio from the Future Baseline

For internal discussions only - preliminary results subject to revisions (2/11/2020)

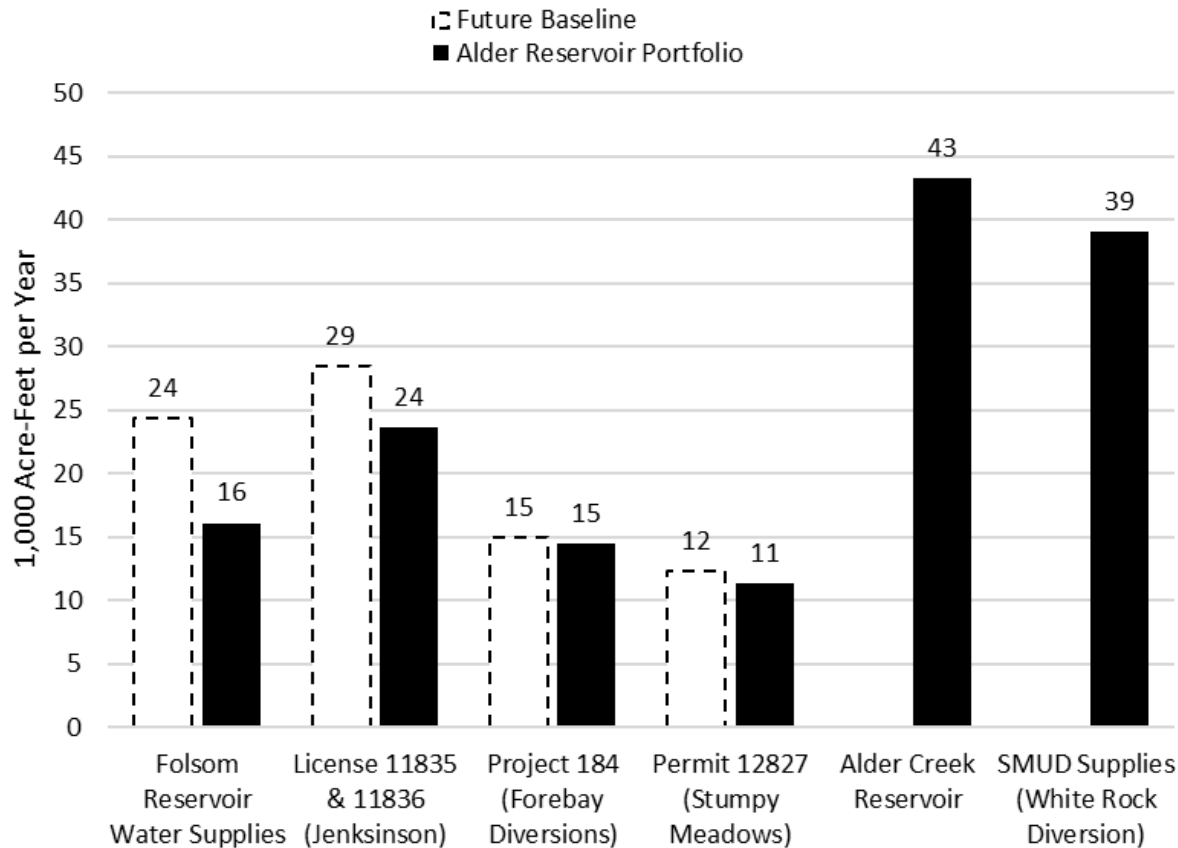
Alder Creek Storage and Conservation Project Portfolio



Annual Water Deliveries to El Dorado County to Meet 2070 Demands Under Alder Creek Portfolio compared to the Future Baseline Conditions

For internal discussions only - preliminary results subject to revisions (2/11/2020)

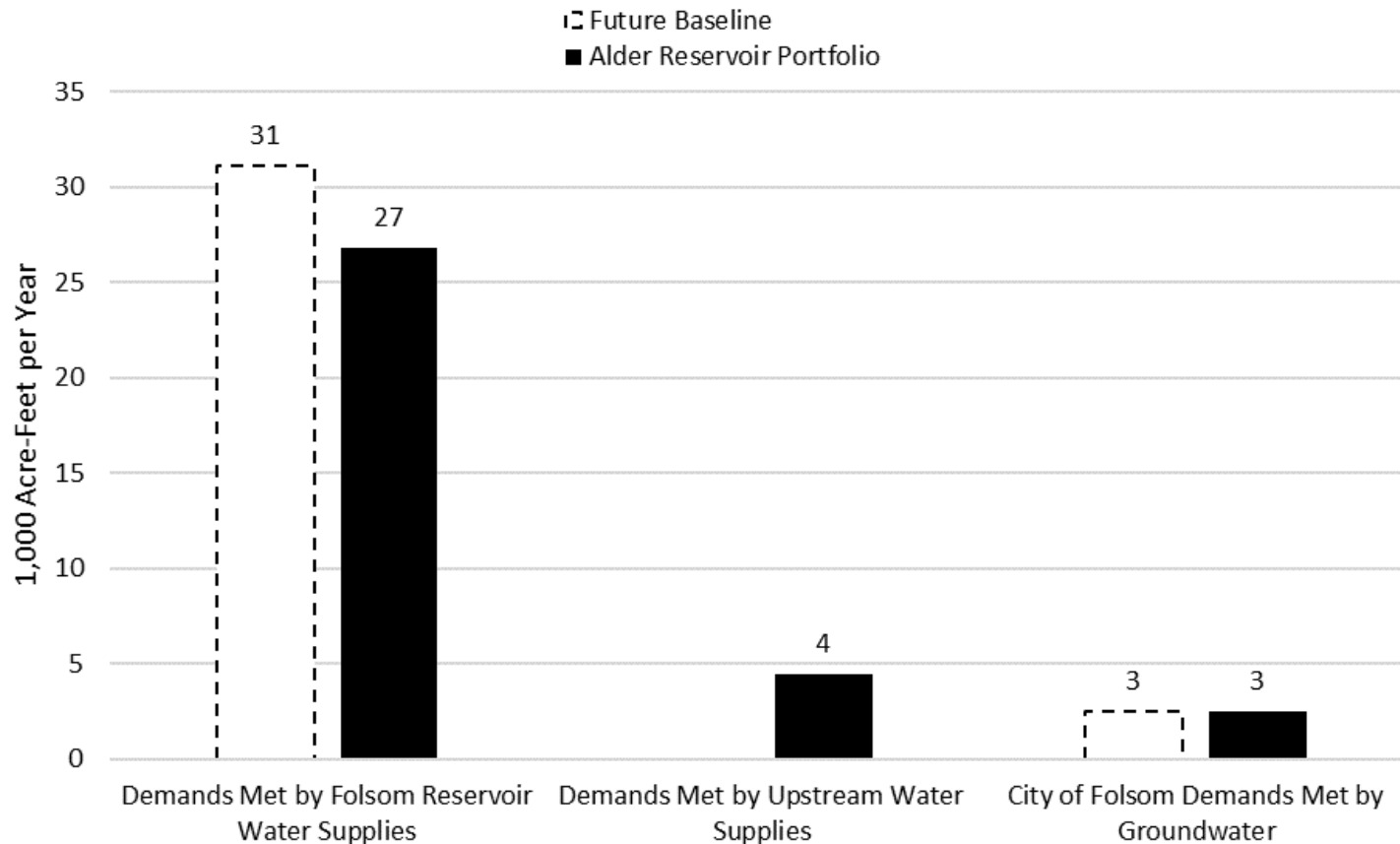
Alder Creek Storage and Conservation Project Portfolio



El Dorado County 2070 Water Supply Composition under Alder Creek Reservoir Portfolio Compared to the Future Baseline Conditions

For internal discussions only - preliminary results subject to revisions (2/11/2020)

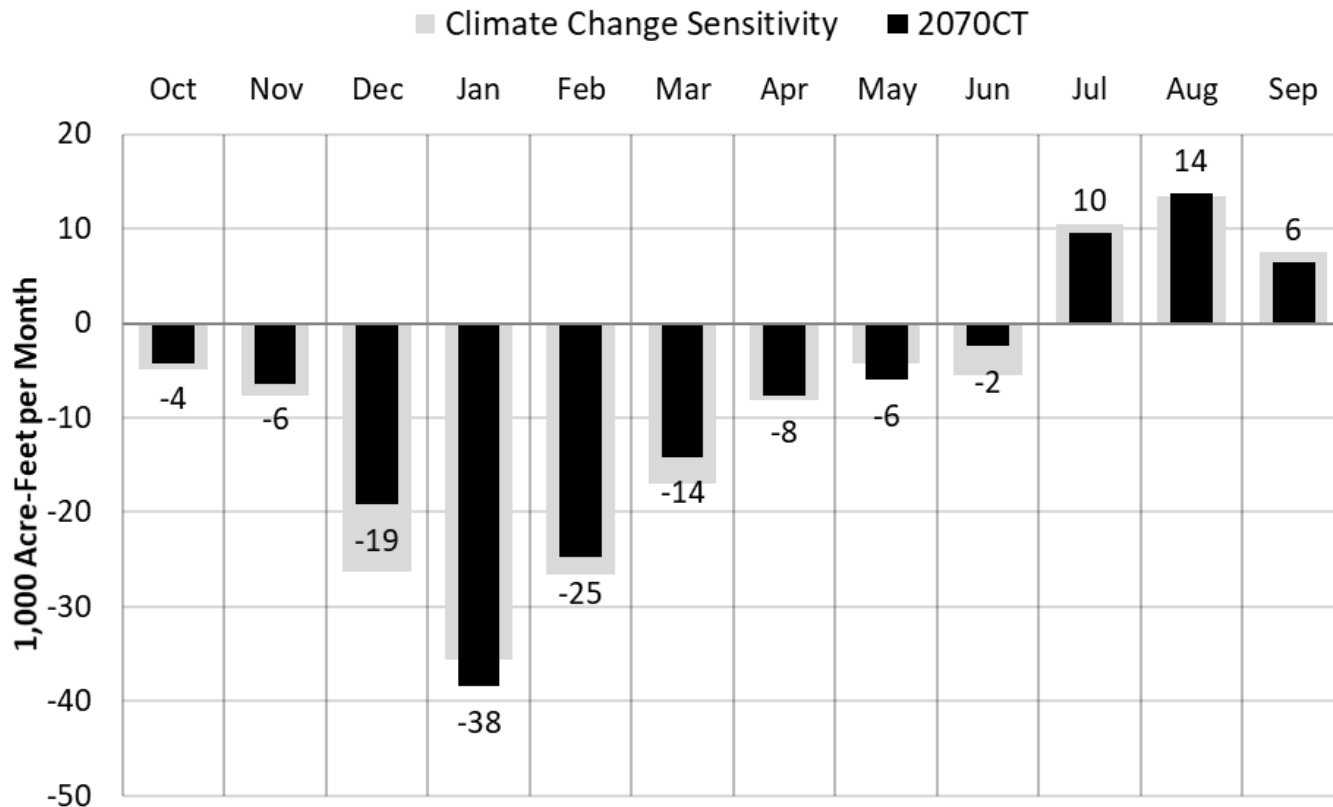
Alder Creek Storage and Conservation Project Portfolio



City of Folsom 2070 Water Supply Composition under Alder Creek Reservoir Portfolio Compared to the Future Baseline Condition

For internal discussions only - preliminary results subject to revisions (2/11/2020)

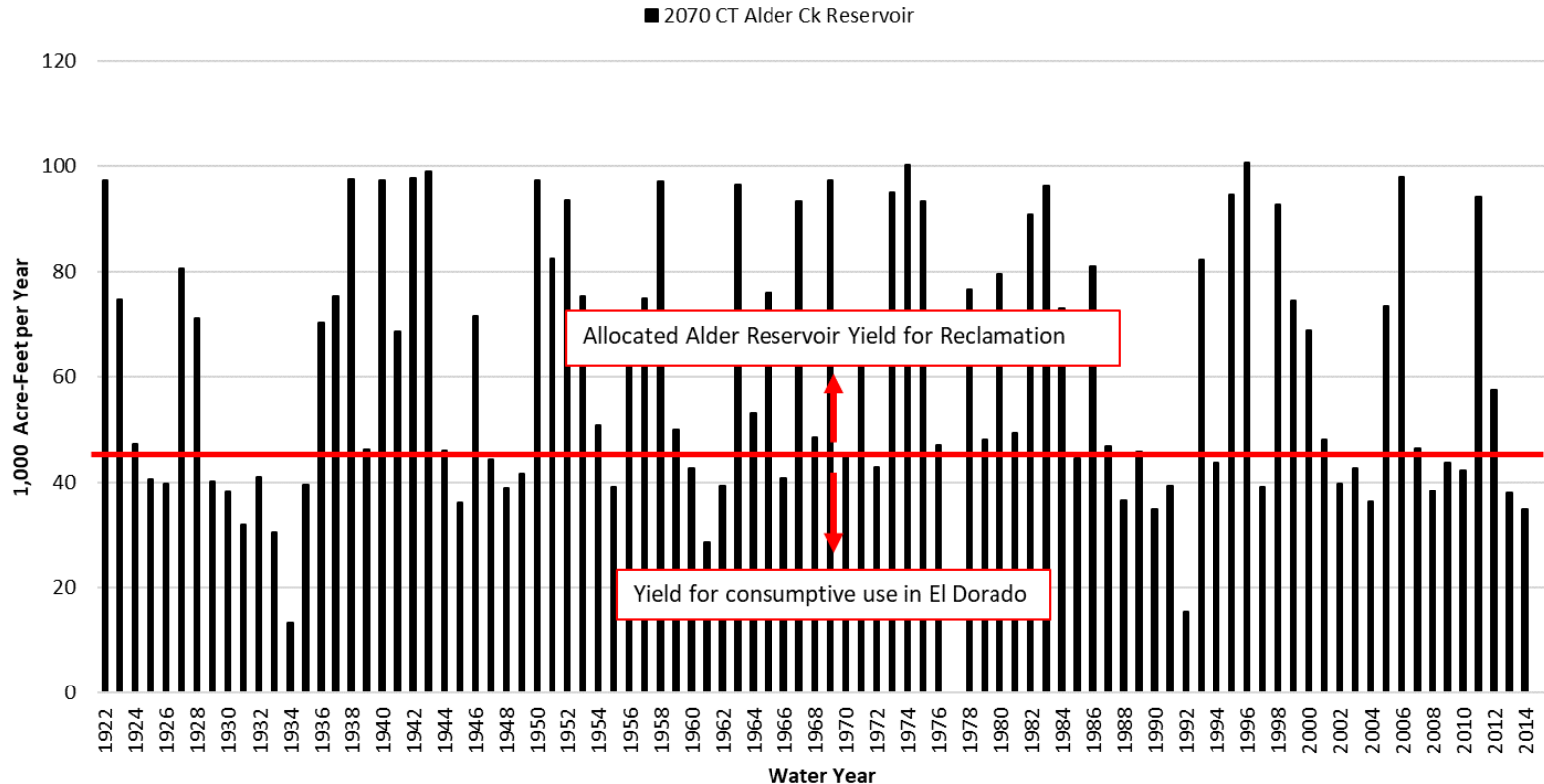
Alder Creek Storage and Conservation Project Portfolio



Monthly Change in Folsom Reservoir 2070 Inflows during Wet Years Under Alder Creek Portfolio Compared to the Future Baselines

For internal discussions only - preliminary results subject to revisions (2/11/2020)

Alder Creek Storage and Conservation Project Portfolio

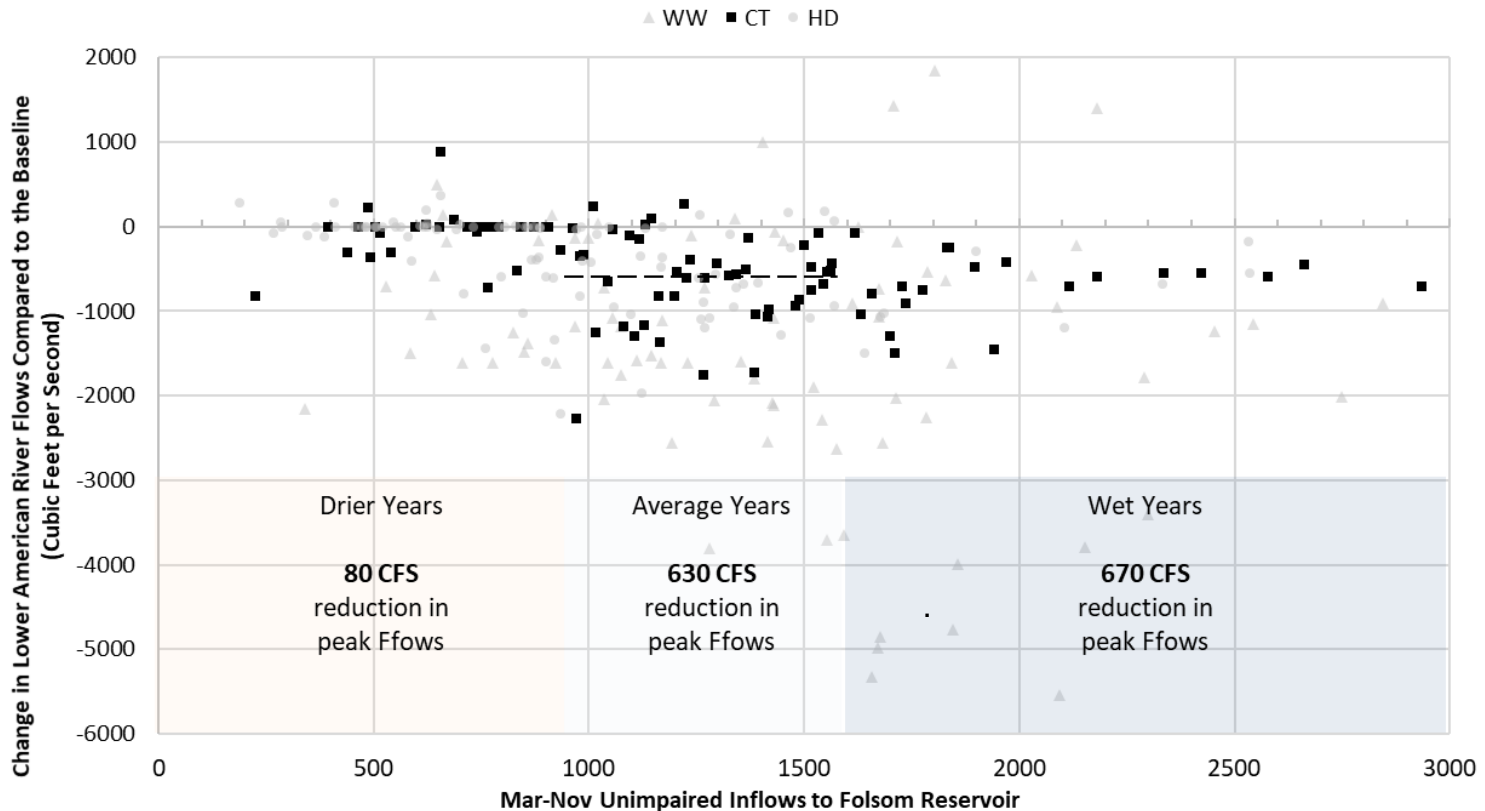


Alder Creek Reservoir Annual Yield (May-September Drawdown)

For internal discussions only - preliminary results subject to revisions (2/11/2020)

Alder Creek Storage and Conservation Project Portfolio

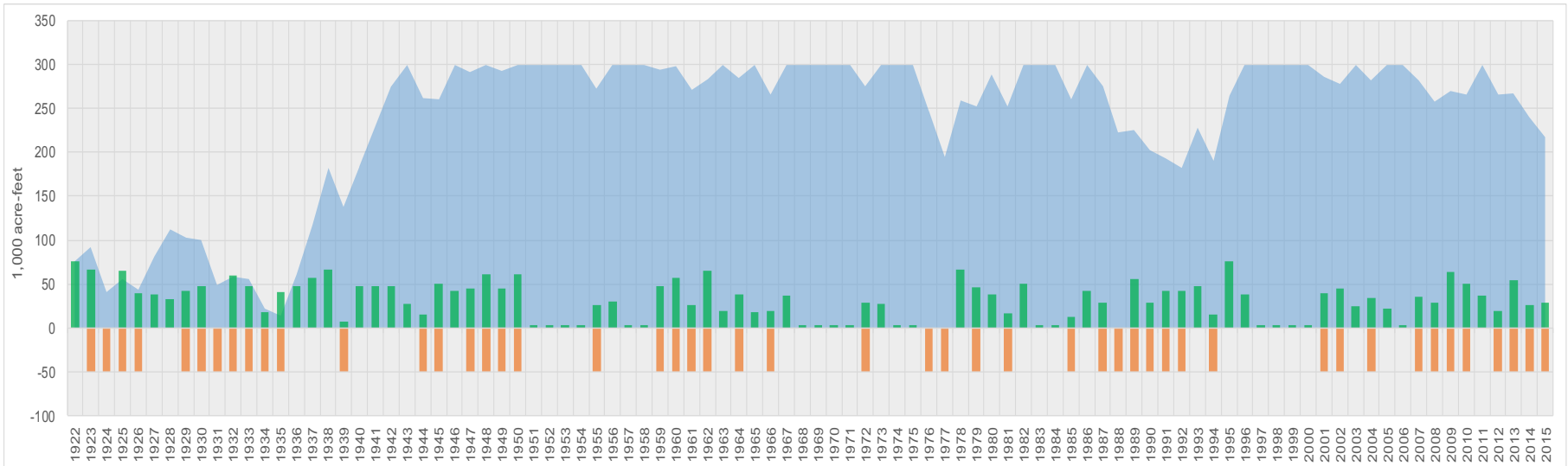
Change in Peak Flows in the Lower American River



Change in Lower American River 2070 Peak Flows at Fair Oaks Under Alder Creek Portfolio Compared to the Future Baseline

For internal discussions only - preliminary results subject to revisions (2/11/2020)

Folsom Dam Raise with Groundwater Banking



	2070 Central Tendency	2070 Hot-Dry	2070 Wet- Warm
Recharge (TAF/year)	32.3	32.2	19.3
Recovery (TAF/year)	26.1	27.3	13.3
Loss (TAF/year)	4.0	3.7	3.7
Groundwater Bank Storage (TAF)	237.2	205.7	276.5

For internal discussions only - preliminary results subject to revisions (2/11/2020)